



MONTHLY MEMBERSHIP PROGRESS REPORT

District 19 B

Results as of: 05/31/2018

GMT: HOWARD HUDSON

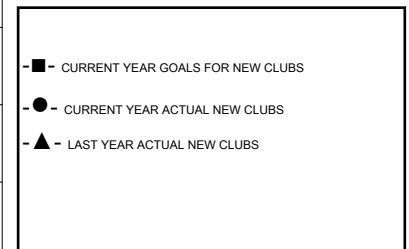
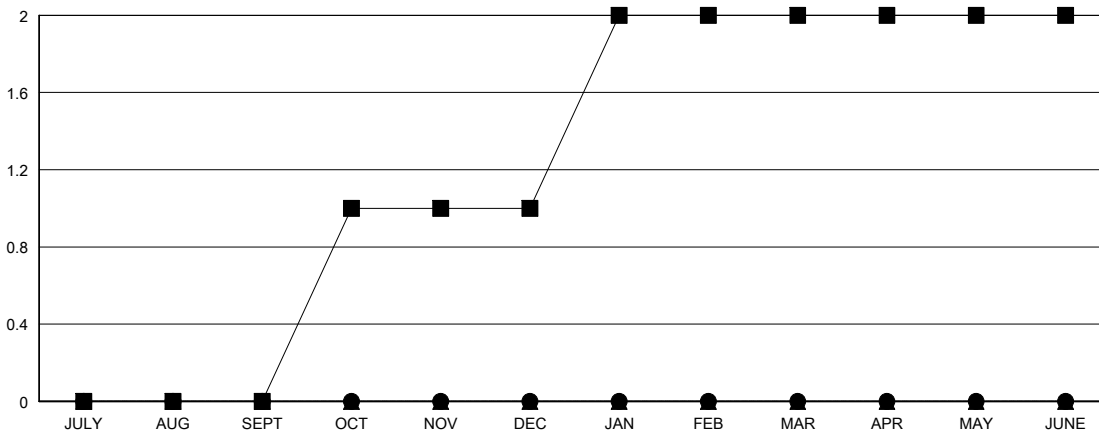
LOCATION WASHINGTON

GMT CA

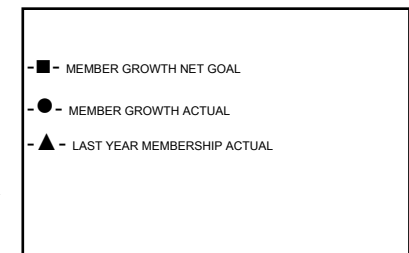
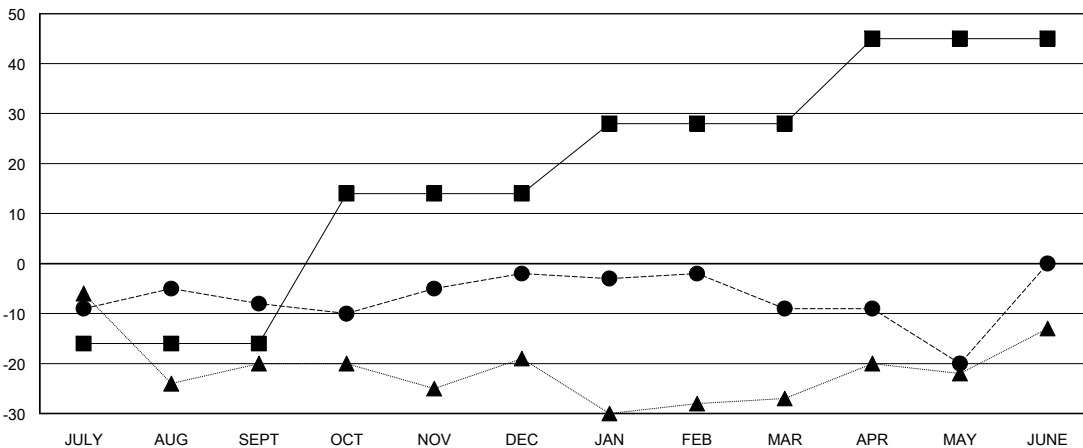
| Clubs | | | |
|-----------------------|---------------|-----------|---------------|
| RESULTS FOR 2017-2018 | | | |
| QUARTER | NEW CLUB GOAL | NEW CLUBS | DROPPED CLUBS |
| JULY/AUG/SEPT | 0 | 0 | 0 |
| OCT/NOV/DEC | 1 | 0 | 0 |
| JAN/FEB/MAR | 1 | 0 | 0 |
| APR/MAY/JUNE | 0 | 0 | 0 |

| Members | | | |
|-----------------------|------------------------|----------------------|--|
| RESULTS FOR 2017-2018 | | | |
| QUARTER | MEMBER GROWTH NET GOAL | MEMBER GROWTH ACTUAL | DROPPED MEMBERS ACTUAL (including transfers) |
| JULY/AUG/SEPT | -16 | 23 | 29 |
| OCT/NOV/DEC | 30 | 25 | 15 |
| JAN/FEB/MAR | 14 | 20 | 27 |
| APR/MAY/JUNE | 17 | 18 | 28 |

GOALS AND ACTUAL NEW CLUBS CUMULATIVE



GOALS AND ACTUAL MEMBERS CUMULATIVE



| |
|------------------|
| DROPPED CLUBS: 0 |
|------------------|

18 CLUBS OF 32 ADDED 1 OR MORE NEW MEMBERS

| GENDER DISTRIBUTION | |
|--|--------------|
| MALE | 458 (57.97%) |
| FEMALE | 332 (42.03%) |
| Women Percentage Fiscal Year Goal: 42% | |

| DROPPED MEMBERS | |
|-----------------|-----------|
| DECEASED | 14 |
| CLUB CANCELLED | 0 |
| OTHER | 84 |
| TOTAL | 98 |

[CLICK HERE FOR CUMULATIVE MEMBERSHIP DATA](#)

| | |
|---------------------------------|-----|
| TOTAL FAMILY UNIT MEMBERS | 179 |
| FAMILY MEMBERS PAYING HALF DUES | 91 |